

D936 / D937 Series — Direct Operated Solenoid

Solenoid Proportional Valves

ISO 4401 Size 03 (NG6) / ISO 4401 Size 05 (NG10)

4 to 40 l/min (10.6 gpm) / 50 to 100 l/min (26.4 gpm)



D633 / D634 Series — Direct Drive Servo Valves

Servo-Proportional Valves With Integrated Electronics

ISO 4401 Size 03 to 05



Model Number	D633-303B	D633-317B	D633-308B	D633Z570B	D634Z395C	D634Z549A	D634-1019	D634-1003	D634Z1044
Flow (gpm @ 1000 psi total drop)	1	2	5	10	16	26	16	26	42
Flow (gpm @ 150 psi total drop)	0.5	1	2	4	6	10	6	10	16

Pilot Operated Proportional Valves

D660 Series — Servo Jet Pilot stage

Servo-Proportional Valves With Integrated Electronics

ISO 4401 Size 05 to 10

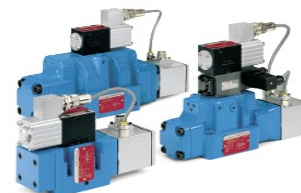


Model Number	D661-5718	D661-5712	D661-4881 (4088)	D662-4885 (4821)	D662-4886 (4024)	D662-4887 (4812)	D663-4767 (4002)
Flow (gpm @ 1000 psi total drop)	40	54	54	100	170	170	238
Flow (gpm @ 150 psi total drop)	16	21	21	40	66	66	92

D680 Series — Mini DDV Pilot stage

Servo-Proportional Valves With Integrated Electronics

ISO 4401 Size 05 to 10



Model Number	D681-4164 (D681-4030)	D682-4183 (D682-4034)	D682-4184 (D682-4039)	D682-4182 (D682-4027)	D683-4111
Flow (gpm @ 1000 psi total drop)	40	100	170	170	238
Flow (gpm @ 150 psi total drop)	21	40	66	66	92